



Ombersley Road, Worcester, WR3 7BT

Offers Over £350,000

3 1 1



Summary:

Welcome to this impressive three bedroom detached family home, conveniently located within short reach of the city centre as well as schools, shops, doctors surgery and post office. Offering potential to further extend (subject to planning) and customise to suit your personal preferences.

Description:

As soon as you step inside, you'll immediately appreciate the spacious and functional layout that works perfectly for growing families. The large open plan lounge/diner offers ample room for gatherings and family meals with dual aspect views, large patio doors that open out onto the generous garden which allow lots of natural light to fill the room. The kitchen, although in need of a little updating, presents an excellent opportunity to create your dream culinary space. This home offers impressive square footage and space to extend (SPP), you could truly make this the heart of your home. Downstairs WC with integral access into the garage.

Upstairs you will find three good sized bedrooms, offering comfort and privacy for every family member/guest. The master boasts sufficient storage space and with all of the rooms being a decent size, there is potential to re-configure to add an en-suite if you wish. Two further double bedrooms, making this home ideal for growing families. Shower room with separate toilet which could be easily combined to create a large family bathroom.

Further benefits from parking for many vehicles, integral garage, beautiful laid to lawn garden, double glazing and gas central heating.

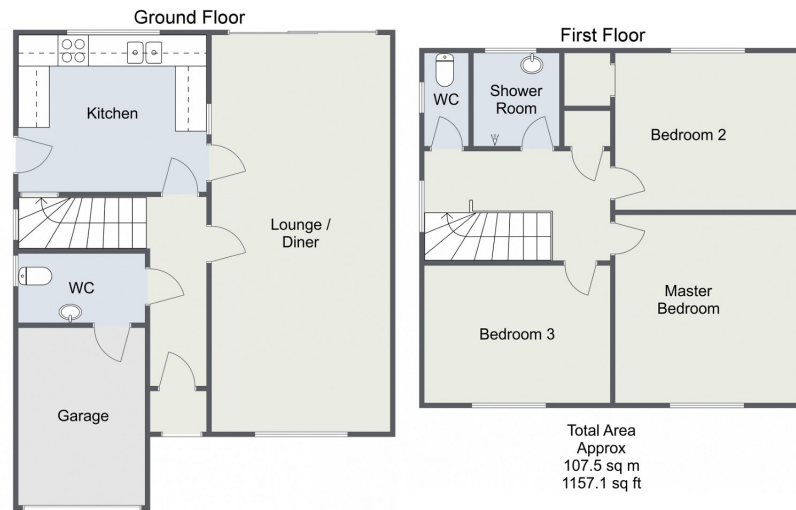
Outside:

Accessed by patio doors in the dining area and from the kitchen side door. The garden here really is impressive, offering lots of safe space for families to enjoy get gatherings and meals together. There is also a patio area perfect for furniture and al fresco dining. Side access for convenience.

Location:



Ombersley Road, Worcester



- Three Double Bedrooms
- Detached
- Family Home
- Generous Parking For Many Vehicles
- Large Rear Garden
- Lounge/Diner



For more information on this house or to arrange a viewing please call the office on:

01905 958 290

Alternatively, you can scan the QR to view all of the details of this property online.



arden
ESTATE AGENTS